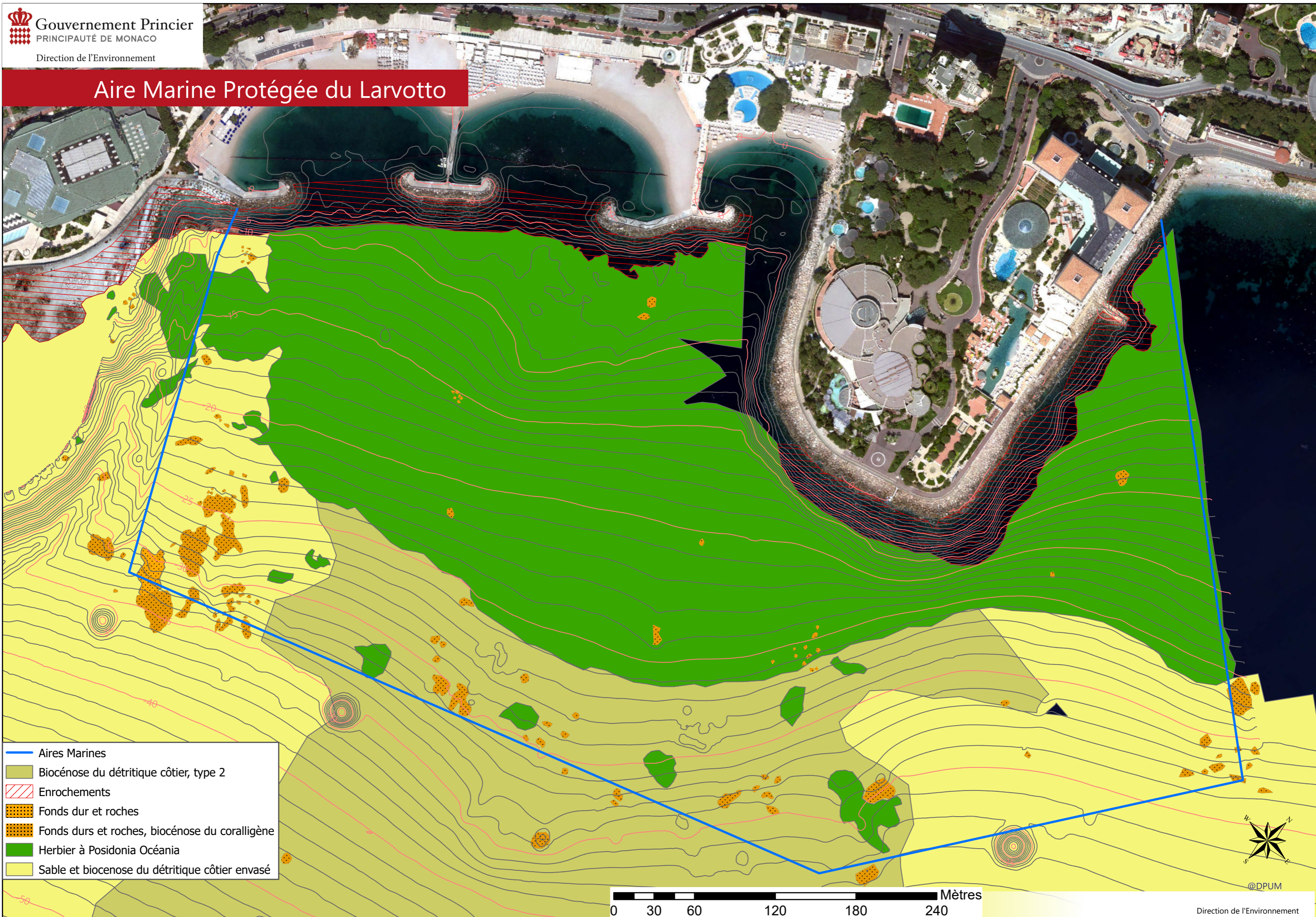







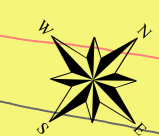


Aire Marine Protégée du Larvotto



-  Aires Marines
-  Biocénose du détritique côtier, type 2
-  Enrochements
-  Fonds dur et roches
-  Fonds durs et roches, biocénose du coralligène
-  Herbier à Posidonia Océania
-  Sable et biocénose du détritique côtier envasé

0 30 60 120 180 240 Mètres



@DPUM